

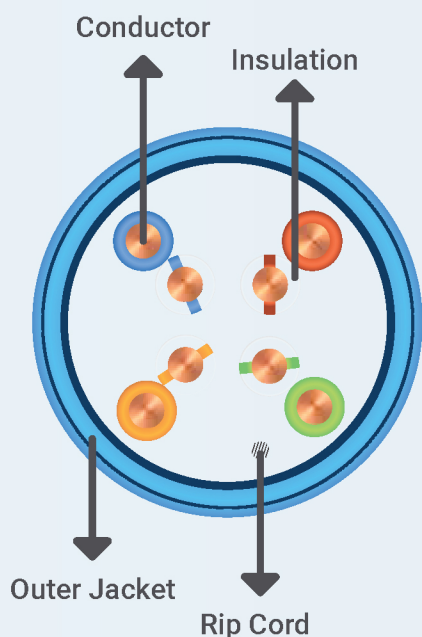
# CAT6 RISER 1000FT UTP CABLE (Bare Copper)

## DESCRIPTION

- Category-6, 23AWG, UTP.
- 8C Pure Copper, 550MHz.
- Riser Rated, 1000ft.

## FEATURES

- High-Performance Category-6 Data Cable.
- 23AWG Pure Copper Conductors.
- 550MHz Bandwidth for Data Applications.
- EIA/TIA 568-C.2, RoHS Compliant, FCC, CE, CSA, ISO/IES.
- ETL Listed, UL Certified, TAA Compliant.



## Specification

### Technical Data

Product Standard Certification	CMR
NVP	69%

### Conductor

Size	23AWG
Material	100% Pure Copper

### Construction

Divider (Pair Separator)	No
Ripcord	Yes

### Outer Jacket

Material	FR-PVC
Outer Diameter	6.8 ±0.3mm (0.268"±0.012")

### Insulation

Material	HDPE
----------	------

### Color of Pairs

Pair 1	Blue, White-Blue
Pair 2	Orange, White-Orange
Pair 3	Green, White-Green
Pair 4	Brown, White-Brown

### Mechanical Characteristics

DC Resistance Max. (ohms/100m)	9.38
Resistance Unbalance Max. (%)	5
Mutual Capacitance Max. (nF/100m)	5.5
Capacitance Unbalance Max. (pF/100m)	330

### Characteristic Impedance

Unshielded Twisted Pair Category 6 CMR, ANSI/EIA/TIA 568B, UL 444, UL 1666 (CMR), TAA Compliant, ETL listed. 100 Mbps TPDDI, 1000 Base-T, 622 Mbps ATM, IEEE 802.3, IEEE 802.5, Digital Video etc, Gigabit Ethernet.

Available Colors



# CAT6 RISER 1000FT UTP CABLE (Bare Copper)

## Performance

Frequency (MHz)	Impedance ( $\Omega$ )	Attenuation (Max.dB/100m)	Pr-Pr NEXT (Min.dB $\geq$ 100m)	PSNEXT (Min.dB $\geq$ 100m)	Pr-Pr FEXT (Min.dB/100m)	PS ELFEXT (Min.dB/100m)	ACR (Min.dB)
0.772	-	1.8	76	74.0	70.0	67	74.2
1	100 $\pm$ 15	2	74.3	72.3	67.8	64.8	72.3
4	100 $\pm$ 15	3.8	65.3	63.3	55.8	52.7	61.5
8	100 $\pm$ 15	5.4	60.8	58.8	49.7	46.7	55.4
10	100 $\pm$ 15	6	59.3	57.3	47.8	44.8	53.3
16	100 $\pm$ 15	7.7	56.3	54.3	43.7	40.7	48.6
20	100 $\pm$ 15	8.6	54.8	52.8	41.8	38.7	46.2
25	100 $\pm$ 15	9.6	53.3	51.3	39.8	36.8	43.7
31.25	100 $\pm$ 15	10.8	51.9	49.9	37.9	34.9	41.1
62.5	100 $\pm$ 15	15.7	47.4	45.4	31.9	28.8	31.7
100	100 $\pm$ 15	20.2	44.3	42.3	27.8	24.8	24.1
200	100 $\pm$ 22	29.8	39.8	37.8	25.3	18.7	10
225	100 $\pm$ 22	31.8	38.3	37.0	21.8	16.8	7.2
350	100 $\pm$ 22	33.3	36.1	36.3	19.8	15.3	4.6
400	100 $\pm$ 22	39.8	35.3	34.1	17.1	14.7	---
500	100 $\pm$ 22	46	34.5	32.5	15.2	13.1	---
550	100 $\pm$ 22	51.7	33.2	31.2	13.2	12.2	---

# CAT6 RISER 1000FT UTP CABLE (Bare Copper)

## Fluke Test



**Cable ID: NEW YORK C6 CMR NCR WH**

**Test Limit: TIA Cat 6 Perm. Link**

Limits Version: V7.5

Date / Time: 08/23/2023 10:52:53 AM

Operator: YU

**Headroom 1.0 dB (NEXT 3,6-4,5)**

Cable Type: Cat 6 U/UTP

NVP: 69.0%

Main: Versiv

S/N: 3506011

Software Version: V6.5 Build 5

Calibration Date: 08/11/2023

Adapter: DSX-5000 (DSX-PLA004)

S/N: 3571019

**Test Summary: PASS**

Remote: Versiv

S/N: 3491198

Software Version: V6.5 Build 5

Calibration Date: 08/11/2023

Adapter: DSX-5000R (DSX-PLA004)

S/N: 3571018

Length (m), Limit 90.0	[Pair 7,8]	92.1
Prop. Delay (ns), Limit 498	[Pair 4,5]	478
Delay Skew (ns), Limit 44	[Pair 4,5]	33
Resistance (ohms)	[Pair 4,5]	14.63
Insertion Loss Margin (dB)	[Pair 4,5]	1.1
Frequency (MHz)	[Pair 4,5]	250.0
Limit (dB)	[Pair 4,5]	31.1

Worst Case Margin Worst Case Value

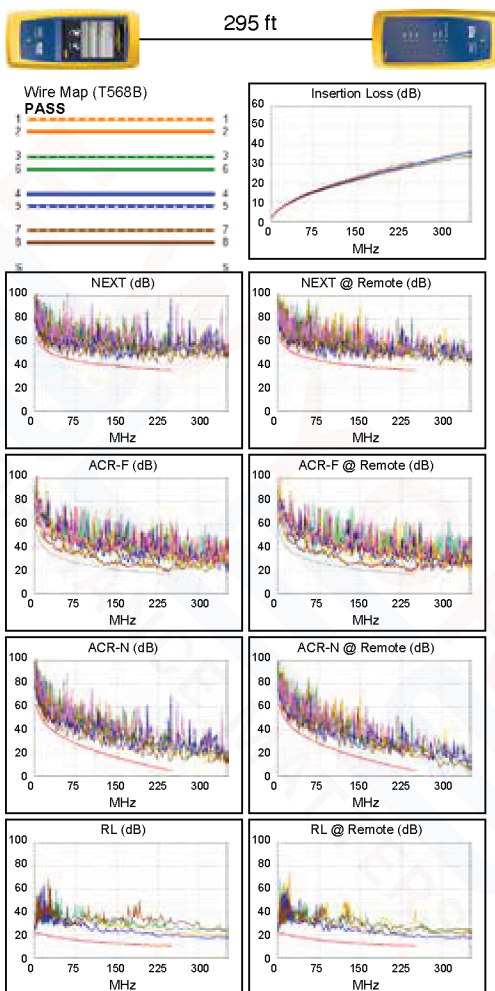
<b>PASS</b>	MAIN	SR	MAIN	SR
Worst Pair	3,6-4,5	3,6-4,5	3,6-4,5	3,6-4,5
<b>NEXT (dB)</b>	1.0	1.4	5.9	6.7
Freq. (MHz)	58.5	37.5	223.5	206.5
Limit (dB)	45.6	48.7	36.1	36.7
Worst Pair	4,5	3,6	3,6	3,6
<b>PS NEXT (dB)</b>	3.2	3.5	7.9	8.9
Freq. (MHz)	24.3	37.5	248.5	244.0
Limit (dB)	49.3	46.3	32.7	32.9

<b>PASS</b>	MAIN	SR	MAIN	SR
Worst Pair	3,6-4,5	3,6-4,5	3,6-4,5	3,6-4,5
<b>ACR-F (dB)</b>	1.8	1.6	1.8	1.6
Freq. (MHz)	243.0	243.0	243.0	243.0
Limit (dB)	16.5	16.5	16.5	16.5
Worst Pair	3,6	4,5	3,6	4,5
<b>PS ACR-F (dB)</b>	4.6	4.4	4.6	4.4
Freq. (MHz)	243.5	243.0	243.5	243.0
Limit (dB)	13.5	13.5	13.5	13.5

<b>N/A</b>	MAIN	SR	MAIN	SR
Worst Pair	3,6-4,5	3,6-4,5	3,6-4,5	3,6-4,5
<b>ACR-N (dB)</b>	1.3	1.7	8.0	10.7
Freq. (MHz)	24.3	37.5	248.5	250.0
Limit (dB)	43.0	37.7	4.4	4.2
Worst Pair	4,5	3,6	3,6	3,6
<b>PS ACR-N (dB)</b>	3.3	3.9	9.4	10.4
Freq. (MHz)	24.3	37.5	248.5	244.0
Limit (dB)	40.6	35.3	1.8	2.2

<b>PASS</b>	MAIN	SR	MAIN	SR
Worst Pair	4,5	4,5	4,5	4,5
<b>RL (dB)</b>	7.6	7.5	7.6	7.6
Freq. (MHz)	227.5	248.0	227.5	249.5
Limit (dB)	10.4	10.1	10.4	10.0

Compliant Network Standards:  
10BASE-T 100BASE-TX 100BASE-T4  
1000BASE-T 2.5GBASE-T 5GBASE-T  
ATM-25 ATM-51 ATM-155  
100VG-AnyLan TR-4 TR-16 Active  
TR-16 Passive



LinkWare™ PC Version 10.5

Project: DEFAULT  
Untitled1

**FLUKE**  
networks